



**PATRICIA GOODBRAND**

*Head Teacher*

**Speyside High School** Mary Avenue, Aberlour AB38 9QU

Tel 01340 871522

Email [admin.speysidehigh@moray-edunet.gov.uk](mailto:admin.speysidehigh@moray-edunet.gov.uk)

Website [www.speysidehighschool.net](http://www.speysidehighschool.net)



Our Ref: PG/ZC

Date: 6 August 2020

Dear S1 Parents/Carers/S1 Pupils

We are looking forward to welcoming you all to Speyside High School on Wednesday 12 August.

If you are arriving by foot, please enter the building via the Technical Fire Door – staff will be on hand to direct S1 pupils to the correct door. Pupils arriving by bus will be disembarked by staff and S1 pupils will be directed to enter via the Technical Fire Door. Please find enclosed a copy of the bus pick-up points and approximate timings, for your information. Please note: all pupils must sanitise their hands on entering the building (sanitising gel will be provided).

S1 pupils should then make their way directly to the Auditorium - staff will be available to guide you. On entering the Auditorium, S1 pupils should sit in their allocated seat – these will be set out by House (Fiddich, Livet and Rinnes) and then alphabetically by surname. If you are unsure of your House, please check the pin board in the Auditorium. Miss Boyd (Depute Head Teacher/S1 Year Head) will meet you in the Auditorium. S1 pupils will then be provided with their timetables and any other information that is required. You will also meet your S2 Buddies, who will take you from class to class.

During the first period, your teacher will do a Health & Wellbeing check-in and go over key Health and Safety information, including:

1. Hand hygiene – expectations of hand washing.
2. Entry and exit of school – which entrance and exits to use.
3. Movement around school – one-way system. Further information about the one-way system is included in this letter.
4. Lunchtime and break arrangements - S1 pupils will get an early break (10.05am) and lunch (12.10pm).
5. Classroom protocols/activities – maintain 2m distance from any adults. Pupils will be asked to wipe desks and tables with anti-bacterial wipes at end of class.

**School Uniform** - Currently it is not possible to order any school jumpers. As a result, it is asked that young people come dressed in black trousers and black jumpers or sweatshirts with a white shirt or polo shirt and black shoes where possible.

Yours faithfully

**Mrs P Goodbrand**  
**Head Teacher**



**Healthy  
Respectful  
Responsible  
Achieving  
Ambitious  
Dedicated**

# SPEYSIDE HIGH SCHOOL - BUS PICK UP POINTS/ APPROXIMATE TIMES



Bus D – Rothes – ME/981/D		
	Home Farm	0800
	Station House	0805
	Dundurcas	0810
	Rothes	0815
	Roadside	0822
	School	0830

Bus M – Rothes – ME/981/M		
	Glen of Rothes	0800
	Rothes Square	0815
	School	0830

Bus F – Tomintoul – ML/981/F		
	Tomintoul Square	0750
	Auchnarrow	0803
	Tomnavoulin	0805
	Delnashaugh	0820
	Marypark	0824
	School	0830

Bus K – Dufftown – ML/981/K		
	Legion	0815
	Roadside	0817
	Craigellachie	0820
	School	0830

Bus L – Dufftown – ME/981/L		
	Dufftown Square	0810
	Legion	0815
	Roadside	0817
	Craigellachie	0820
	School	0830

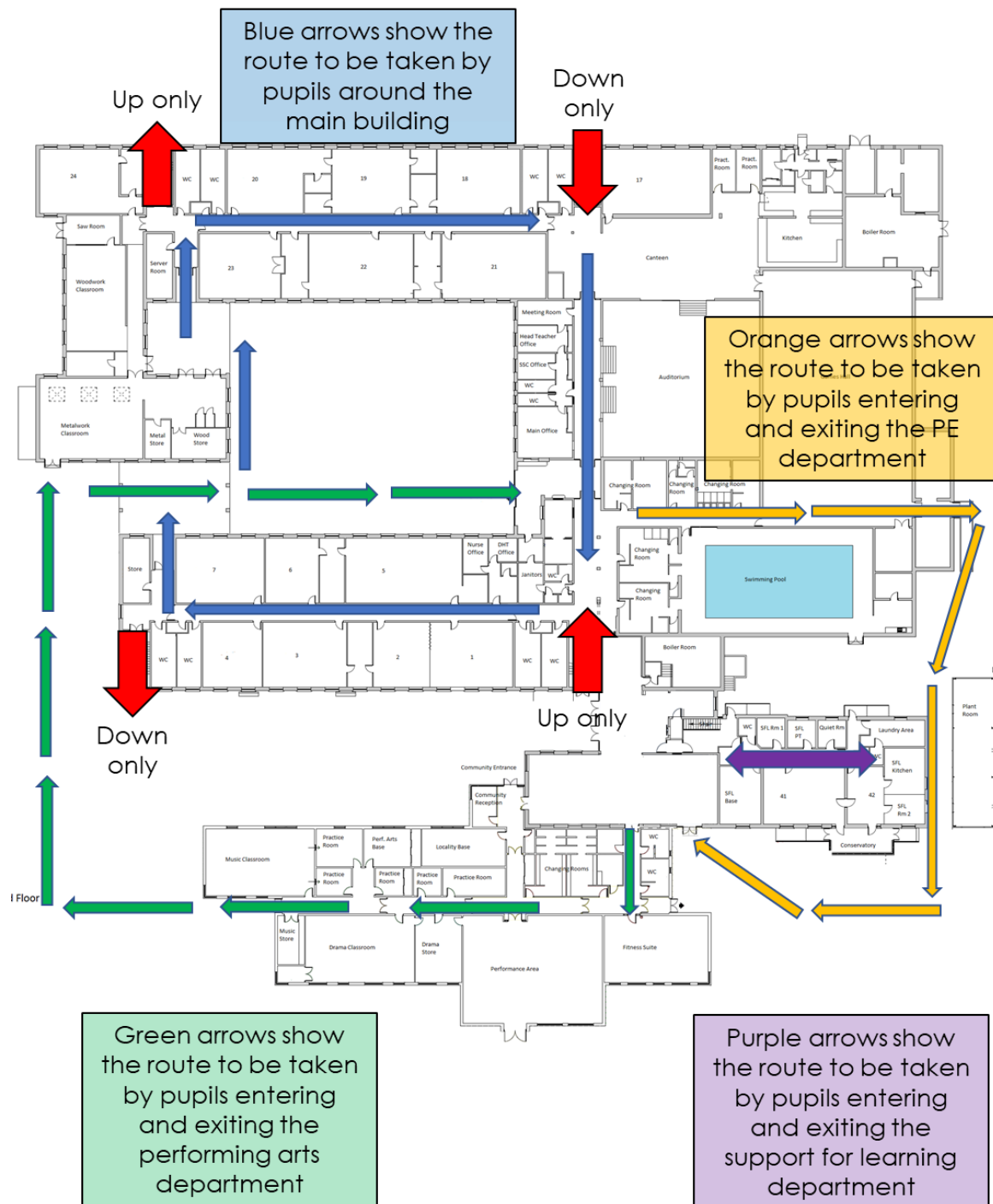
Bus B – Dufftown – ML/981/B		
	Parkmore	0755
	Dufftown Square	0800
	Legion	0815
	Craigellachie	0820
	School	0830

Bus J – Edinville – ME/981/J		
	Glenallachie	0800
	Edinville	0805
	Edinville Hall	0807
	Tomnabent Cottages	0810
	Bus Shelter	0812
	School	0830

**Bus G – Knockando – ML/981/G**

Corglass Road End	0755
Knockando	0800
Cardhu Road End	0812
Carron Road End	0815
Archiestown Square	0818
Elchies Road End	0820
MacAllan Road End	0822
School	0830

# Plan for movement around the Ground Floor of the school



## Plan for movement around the First Floor of the school

