



**PATRICIA GOODBRAND**

*Head Teacher*

**Speyside High School** Mary Avenue, Aberlour AB38 9QU

Tel 01340 871522

Email [admin.speysidehigh@moray-edunet.gov.uk](mailto:admin.speysidehigh@moray-edunet.gov.uk)

Website [www.speysidehighschool.net](http://www.speysidehighschool.net)



Our Ref: PG/ZC

Date: 6 August 2020

Dear Parents/Carers/Pupils

Everyone at Speyside High School is very much looking forward to welcoming you all back to school on Wednesday 12 August.

On Wednesday 12 August all pupils will be directed to their entrance doors, where they will be expected to use hand sanitiser.

Pupils on foot should make their way to entrances below.

Bus pupils will be disembarked by staff and directed to appropriate entrances.

Pupils should not congregate in groups but make their way directly to their allocated classroom.

S1	On Wednesday 12 August – Enter via Technical Fire Door and make way to Auditorium – staff will be available to guide S1s.	All pupils <b>MUST</b> sanitise their hands on entering the building and follow one way system as directed.
S2	Enter by Library Stairwell Entrance	
S3	Enter by Library Stairwell Entrance	
S4	Enter by Front Door	
S5	Enter by Front Door	
S6	Enter by Technical Fire Door	

On entrance to the building a one way system will be in place and pupils should follow this one way system to their first classroom as designated below.

Tutor Group	Room
S1	Auditorium
2F	37
2L	16
2R	10
3F	7
3L	6
3R	11
4F	1
4L	36
4R	35
5F	18
5L	4
5R	24
S6	15

Pupils/.



Healthy  
Responsible  
Respectful  
Achieving  
Ambitious  
Dedicated



**PATRICIA GOODBRAND**

*Head Teacher*

**Speyside High School** Mary Avenue, Aberlour AB38 9QU

Tel 01340 871522

Email [admin.speysidehigh@moray-edunet.gov.uk](mailto:admin.speysidehigh@moray-edunet.gov.uk)

Website [www.speysidehighschool.net](http://www.speysidehighschool.net)



-2-

All movement around the building should be as per one way system detailed in included and following signs.

You will all be issued with your timetables during Period 1 on Wednesday 12 August.

Health and Wellbeing check-in will be the first activity.

Details of further Health and Safety measures will be discussed during this period. These will include:

1. Hand hygiene – expectations of hand washing.
2. Entry and exit of school – which exits to use.
3. Movement around school – one way system.
4. Lunchtime and break arrangements to be confirmed - S1,2,3 lunch Period 5  
S4,5,6 lunch at usual times, Monday to Thursday only.
5. Classroom protocols/activities – maintain 2m distance from any adults. Pupils will be asked to wipe desks and tables with anti-bacterial wipes at end of class.

**School Uniform** - Currently it is not possible to order any school jumpers. As a result, it is asked that young people come dressed in black trousers and black jumpers or sweatshirts with a white shirt or polo shirt and black shoes where possible.

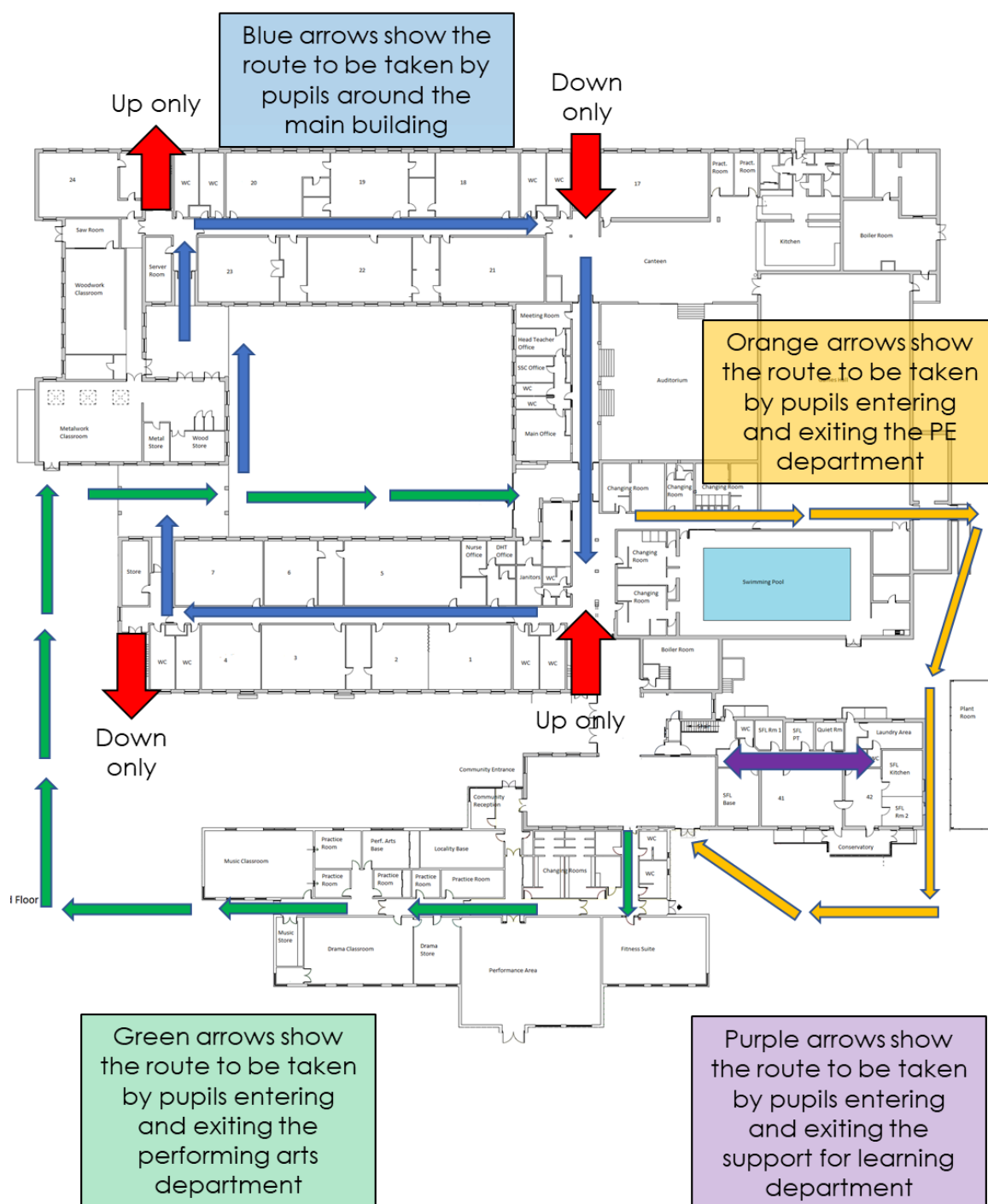
Yours faithfully

**Mrs P Goodbrand**  
**Head Teacher**



Healthy  
Respectful  
Responsible  
Achieving  
Ambitious  
Dedicated

# Plan for movement around the Ground Floor of the school



# Plan for movement around the First Floor of the school

